



Microsoft Exchange Products

ARCHIVE ATTENDER®

Mailbox, PST File and Public Folder Archiving



Archive Attender is an administrator driven solution designed to selectively move or copy messages from Exchange mailboxes, PST files and public folders to any storage device visible to the application via the network. Management is executed through an application interface that can be used to setup the schedule, search the indexed archives and view reports. Archive Attender assists companies with storage and compliance requirements while offering a flexible archiving architecture that does not require a SQL database or proprietary hardware.

Archive Attender offers a flexible architecture.

- Easy, 15-Minute Installation
- No SQL Database Required
- No Client Installation
- No Installation Required on the Exchange Server
- No Database or Proprietary Hardware
- All Content is Stored in Native Format

Pricing starts at **\$16/user** with Volume Discounts Available



Microsoft
CERTIFIED
Partner



Ph. 800.255.5155 or 412.206.0005
www.sherpasoftware.com

Features

Archiving Features

- Archive data from Exchange mailboxes, public folders and PST files
- Archive from the Exchange Journal mailbox to meet compliance regulations
- Eliminate PST files by automating their discovery, identifying their owners and importing their data into the archives
- In addition to messages, archive contacts, calendar entries, notes, tasks and journal entries
- Customize archiving policies to specific mailboxes, entire Exchange servers or specific AD groups
- Archive messages based on quotas, sender, subject, date, age, location and size
- In conjunction with Mail Attender, archive based on keywords, attachment type, content, etc.
- Replace original messages with plaintext or HTML-based stubs

Compliance Features

- Archive for specific users/departments
- Archive specific content based on keywords
- Archive all incoming and outgoing messages from the Journal mailbox in native format
- Search archives for compliance, legal, HR, etc. requirements
- Generate manager search views that can be used, through a web interface, to search the archives of a group of users
- Maintain audit trails of all activity within the archive
- Enforce retentions on archived data so information is automatically purged after its "useful" life

Administrative Features

- Product management can be driven with an administrative console and through Powershell scripts
- Control users' access to the archive

- Multi-threaded processing architecture for optimum performance
- Define process-scheduling windows based on flexible start and end times
- Move archived data to secondary storage for hierarchical storage management
- Optionally index all archived content for efficient searching of the data
- Copy search results from the archive into a mailbox, public folder or PST file
- Use the advanced reporting capability to test the results of an archiving policy prior to enforcing the policy

User Features

- If given rights by the administrator, archive, restore, delete and search messages
- Use stubs left in the mailbox to access messages and attachments archived out of mailboxes and PST files
- Search archived messages based on sender, received date, archived date, keywords and attachments within the Outlook interface
- Access archived messages remotely through Outlook Web Access (OWA)

Architecture

- Application console to setup the archiving policies, view reports and search archives
- Does not require installation of any component on the Exchange server
- Compatible with Exchange 5.5, 2000, 2003 and 2007
- Compatible with Outlook 98 and higher

System Requirements

- Windows 2000 or higher
- Microsoft Internet Information Server 5.0 or higher
- Net framework version 1.1 and 2.0 (installed, if not present)
- Approximately 35MB for the Archive Attender console application

FREE trial version at www.sherpasoftware.com



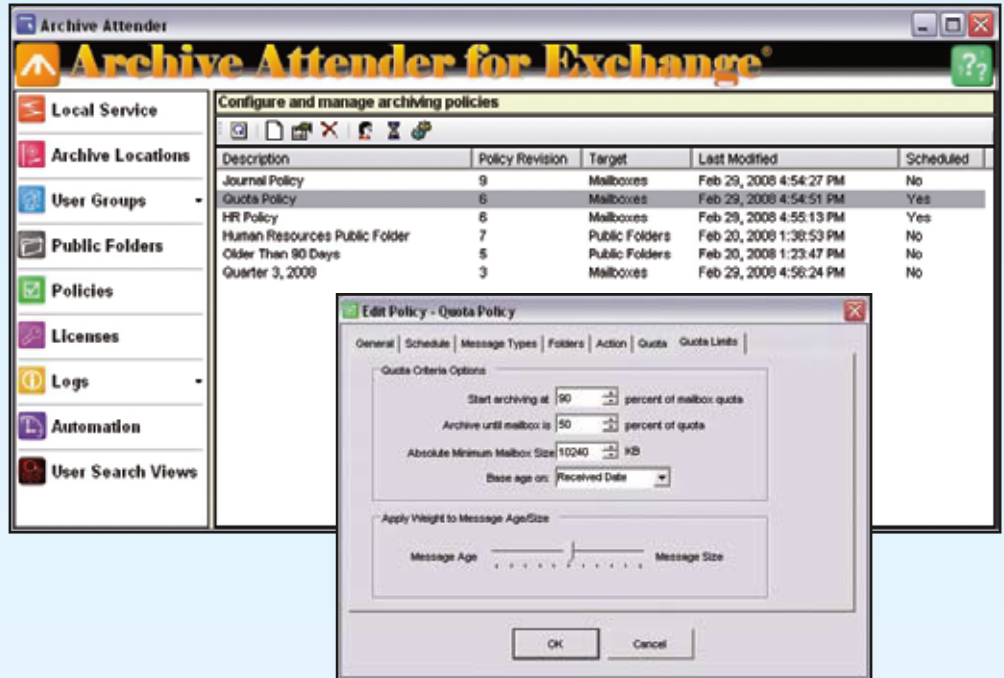
Archive Attender offers a flexible architecture.

- Easy, 15-Minute Installation
- No SQL Database Required
- No Client Installation
- No Installation Required on the Exchange Server
- No Database or Proprietary Hardware
- All Content is Stored in Native Format

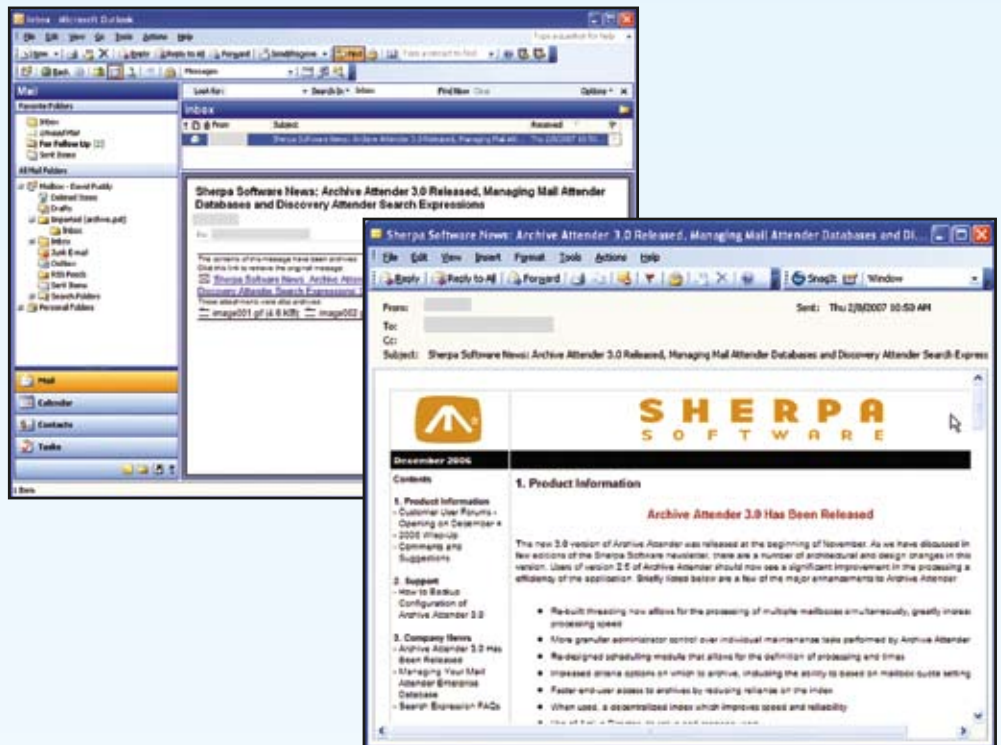


Ph. 800.255.5155 or 412.206.0005
www.sherpasoftware.com

Product Interface



An Archive Attender policy to archive messages based on Exchange Quota settings.



View of a message archived out of a PST file and accessed through a stub left in the user's mailbox.

FREE trial version at www.sherpasoftware.com